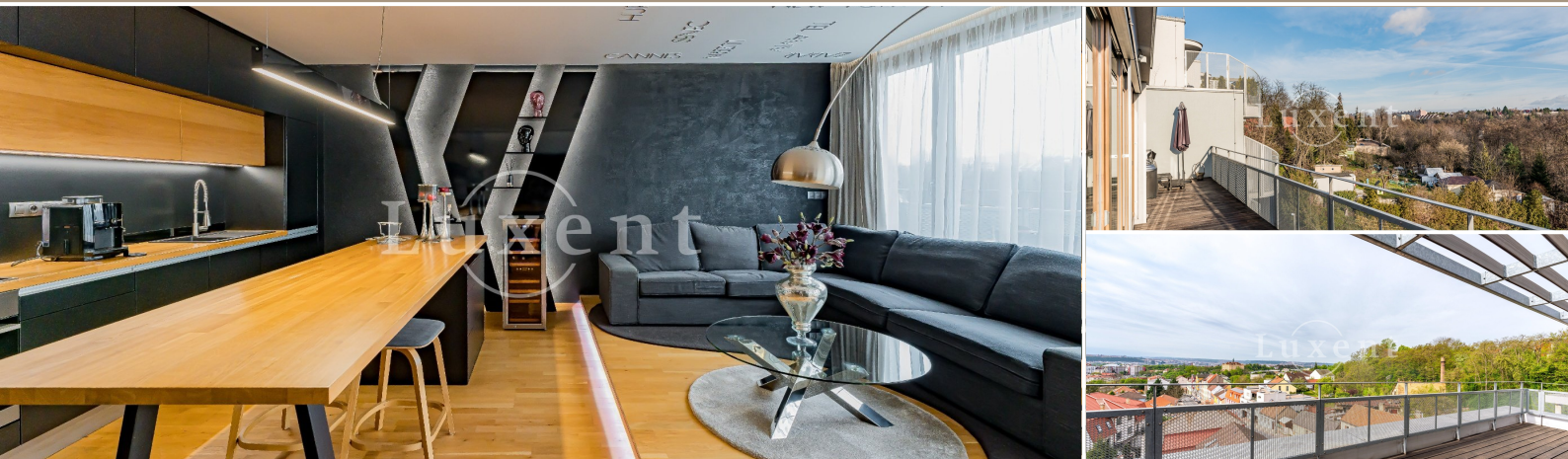




Sale of a modern apartment 7+kt/T, 300 sqm, Prague 8 - Libeň



300 m² Davídkova, Praha 8 36 000 000 CZK per property



WITH THIS PROPERTY, YOU'LL BE ASSISTED BY

Ing. Zdeněk Jemelík

SENIOR SALES SPECIALIST

zdenek.jemelik@luxent.cz

+420 720 310 300

Order number	N6897	Price	36 000 000 CZK per property
Address	Davídkova, Praha 8	Type	Apartments
Disposition	6 and more	Usable area	300 m²
Floor area	209 m²	Low energy	No
Energy performance of the building	B - Very economical	Floor	4th floor
Device	Yes	Garage	Yes
Terrace	91 m²	Cellar	8 m²
Lift	Yes		

About real estate

We offer for sale a superior apartment 7+kt with a floor area of 209 sqm with terraces of 91 sqm, which can be built by connecting two apartments on the last floor of a new building (2016). The apartment has a total of five parking spaces in the garage and two cellars.

The interior can be structurally modified completely according to your own requirements. The current layout includes an entrance hall with built-in wardrobes, living room with kitchenette, 4 bedrooms, 3 bathrooms (shower, bath, toilet, washing machine and dryer), study, wellness room with Finnish sauna and two separate toilets. The kitchen is equipped with Miele appliances - induction, cooker hood, hot air oven, dishwasher, fridge with freezer. From most of the living rooms there is access to the terrace with spectacular views of the whole Prague. There is a comfortable whirlpool Artesian Spas. Large French windows with triple glazing, air conditioning, wooden floors. Lots of storage space and built-in furniture. Designer lights and features, KEF English stereo, BOCA weighted carpets, Bedeur quality double bed.

Quiet part of Prague Libeň with full amenities and great transport accessibility. Bus stop near the house, metro station C - Ladvi (3 min.) or tram stop Bulovka. Location with plenty of greenery, nearby there is a natural monument Prosecké rocks and Okrouhlík, Mazanka estate, Thomayer's orchards, park Nad Korábem and Okrouhlík or Ďáblický háj.