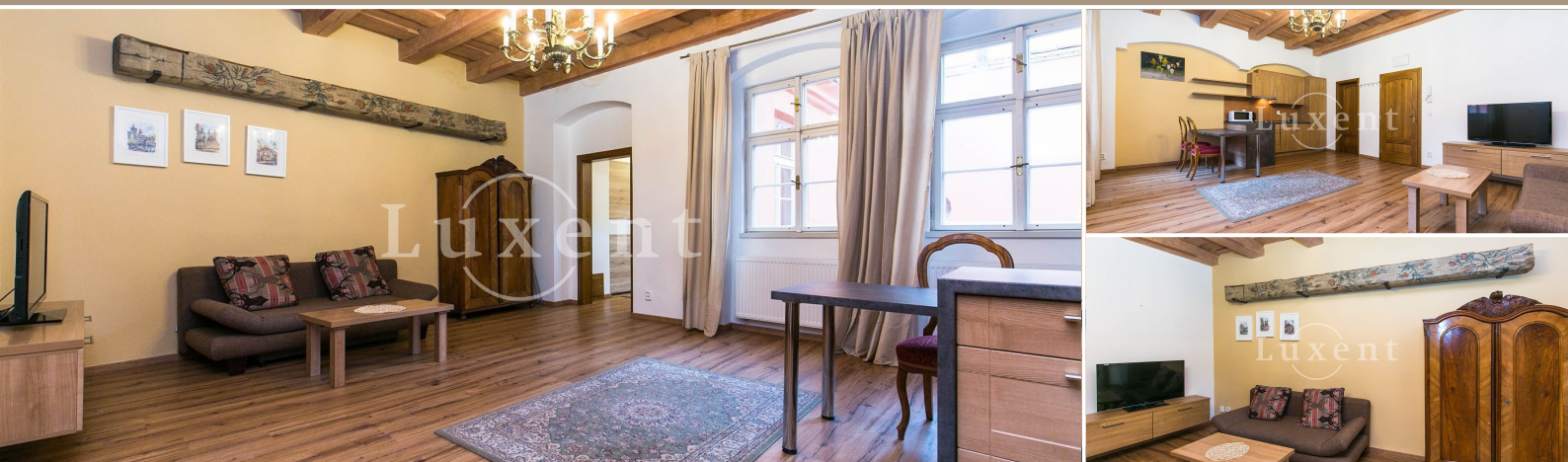




## Rent of an apartment 2+kt, 50 sqm, Mostecká, Prague 1 - Mala Strana



50 m<sup>2</sup> Mostecká, Praha 1 - Malá Strana Leased



WITH THIS PROPERTY, YOU'LL BE ASSISTED BY

**Mgr. Adam Kvasnička**

LEASE SPECIALIST

adam.kvasnicka@luxent.cz

+420 730 511 611

Order number	<b>N6704</b>	Price	<b>Leased</b>
Address	<b>Mostecká, Praha 1 - Malá Strana</b>	Type	<b>Apartments</b>
Disposition	<b>2 + kitchenette</b>	Usable area	<b>50 m<sup>2</sup></b>
Offer status	<b>Leased</b>	Low energy	<b>No</b>
Energy performance of the building	<b>G - Extremely uneconomical</b>	Floor	<b>1st floor</b>
Lift	<b>No</b>	Date to move in	<b>15. 11. 2023</b>

## About real estate

We offer for rent apartment 2+kt with living area of 50 sqm in a lucrative location in Prague 1. Fully furnished apartment is situated on the second floor of a historic building without elevator. The location of the apartment in the inner part ensures absolute tranquility. It includes a shared terrace of 8 m<sup>2</sup> with orientation to the courtyard.

The layout includes a spacious living room with kitchenette, sofa and dining table, a bedroom with double bed and wardrobe, bathroom with shower and toilet. The modern kitchen is fully equipped (induction hob, extractor hood, fridge with freezer, dishwasher, microwave). Original wooden beams, storage space, TV, washing machine.

Historic house from 1586 is registered as a cultural monument with many original features. The building was rebuilt in Baroque style at the end of the 17th century. The interior layout and the facade are done in the classical style from the first quarter of the 19th century.

Exclusive location near the Charles Bridge with all amenities and excellent transport accessibility. Many shops, restaurants and cafes. Nearby Malostranské náměstí, Kampa, Vojanovy sady, Petřín or Valdštejnská zahrada. Short-term sublet is not possible.

Available immediately.