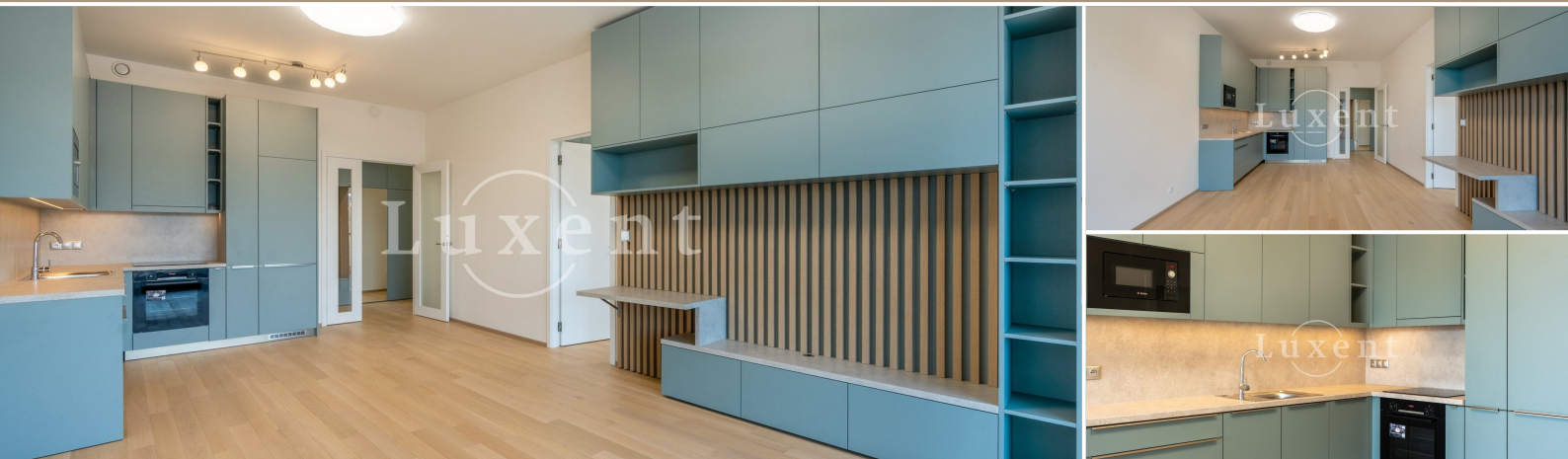




A flat for rent 2+kt/T/GS, 60 sqm, Prague 7 - Holesovice



60 m² Jankovcova, Praha 7 - Holešovice 27 000 CZK per month



WITH THIS PROPERTY, YOU'LL BE ASSISTED BY

Mgr. Adam Kvasnička

LEASE SPECIALIST

adam.kvasnicka@luxent.cz

+420 730 511 611

Order number	N6888	Price	27 000 CZK per month
Address	Jankovcova, Praha 7 - Holešovice	Type	Apartments
Disposition	2 + kitchenette	Usable area	60 m²
Low energy	No	Energy performance of the building	G - Extremely uneconomical
Floor	4th floor	Device	No
Parking	1	Terrace	14 m²
Cellar	2 m²	Date to move in	16. 4. 2024

About real estate

We offer for rent a modern apartment 2 + kk with a floor area of 60 m² in the just completed new building Prague Marina Nova, Prague 7 - Holešovice. The apartment is situated on the 5th floor of the residential project with elevator, it includes a terrace overlooking the Vltava River, a cellar and a garage parking space, which is included in the price.

The layout includes an entrance hall with a wardrobe, living room with a design wall, modern kitchenette equipped with all appliances and access to the terrace, bedroom with built-in wardrobe and access to the terrace, bathroom with bath and toilet and utility room.

Wooden floors, security entrance door, French windows and air conditioning. The property has a permanent 24 hour reception.

The apartment's superior furnishings meet the current demands for comfortable and modern living. The project is located at a popular address in Holešovice with fast transport links to the city centre and full amenities within easy reach. In the vicinity you will find Palmovka, Nádraží Holešovice and Vltavská stations.

For more information about other available apartments in the project, please contact the broker.

Available immediately.