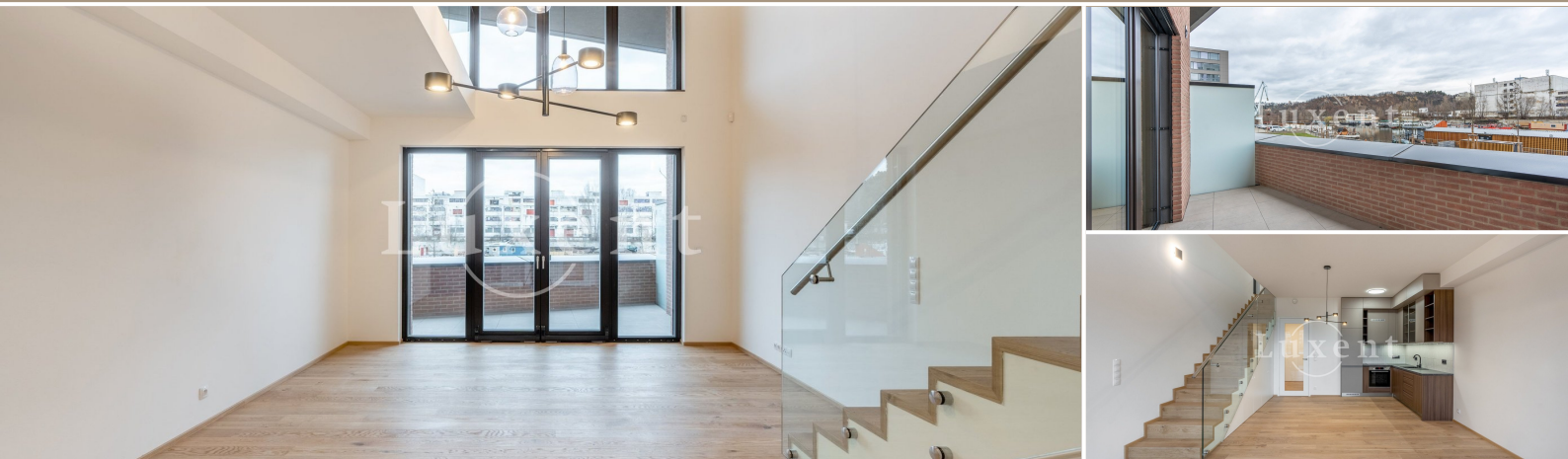




## Flat for rent 2+kt/T/GS, 73 sqm, Prague 7 - Holesovice



73 m<sup>2</sup> Jankovcova, Praha 7 - Holešovice 39 000 CZK per month



WITH THIS PROPERTY, YOU'LL BE ASSISTED BY

**Mgr. Adam Kvasnička**

LEASE SPECIALIST

adam.kvasnicka@luxent.cz

+420 730 511 611

|              |   |                                    |                                   |
|--------------|---|------------------------------------|-----------------------------------|
| Order number | <b>N6829</b>                            | Price                              | <b>39 000 CZK per month</b>       |
| Address      | <b>Jankovcova, Praha 7 - Holešovice</b> | Type                               | <b>Apartments</b>                 |
| Disposition  | <b>2 + kitchenette</b>                  | Usable area                        | <b>73 m<sup>2</sup></b>           |
| Low energy   | <b>No</b>                               | Energy performance of the building | <b>G - Extremely uneconomical</b> |
| Floor        | <b>ground floor</b>                     | Device                             | <b>No</b>                         |
| Parking      | <b>1</b>                                | Terrace                            | <b>12 m<sup>2</sup></b>           |
| Lift         | <b>Yes</b>                              | Date to move in                    | <b>23. 2. 2024</b>                |

## About real estate

We offer for rent a modern duplex apartment 2+kt with a usable area of 73 sqm in the just completed new building Prague Marina Nova, Prague 7 - Holešovice. The apartment is situated on the 1st floor of the residential project, it includes a terrace overlooking the river, a cellar and a garage parking space, which is included in the price.

The layout includes on the ground floor an entrance hall with wardrobe and utility room with washing machine, bathroom with shower and toilet, living room with modern kitchenette equipped with all appliances and access to the terrace. Upstairs has an open plan bedroom with built-in wardrobe, study area and bathroom with bath and toilet.

Wooden floors, security entrance door, French windows. The property has a permanent 24 hour reception.

The apartment's superior furnishings meet the current demands for comfortable and modern living. The project is located at a popular address in Holešovice with fast transport links to the centre and full civic amenities within easy reach. In the vicinity you will find Palmovka, Nádraží Holešovice and Vltavská stations.

Available immediately.