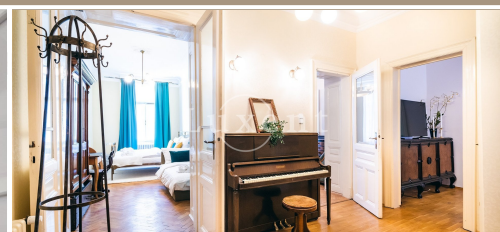




Rent of an apartment 4+kk, 100 sqm, Prague 1 - Josefov



100 m² Pařížská, Praha 1 - Josefov Leased



WITH THIS PROPERTY, YOU'LL BE ASSISTED BY

Mgr. Adam Kvasnička
LEASE SPECIALIST

adam.kvasnicka@luxent.cz
+420 730 511 611

Order number	N5398	Price	Leased
Address	Pařížská, Praha 1 - Josefov	Type	Apartments
Disposition	4 + kitchen	Usable area	100 m²
Offer status	Leased	Floor area	100 m²
Low energy	No	Energy performance of the building	G - Extremely uneconomical
Floor	3rd floor	Device	Yes
Parking	Yes	Lift	Yes

About real estate

We offer this exclusive 4+kk flat of 100 sqm for rent. It is located on Pařížská St., Prague 1. Fully furnished apartment is situated on the 1st floor of Art Nouveau building with lift.

The layout includes a spacious entrance hall, living room, three bedrooms, two bathrooms (bath and shower), kitchen and separate toilet. Throughout the apartment are high ceilings, wooden floors and tiles. Storage space, washing machine, satellite TV, internet.

Favorite location of Pařížská street offers full civic amenities and excellent transport accessibility in the very center of Prague. Quality restaurants, cafes and shops of leading brands. Cultural activities are provided by adjacent theaters, cinemas or music clubs.

You can park in the surrounding streets within the residential zone or you can use the possibility of parking in the nearby Intercontinental Hotel.

The energy performance class G is given only temporarily due to the fulfillment of legal requirements.