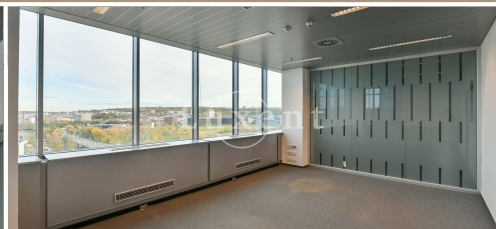
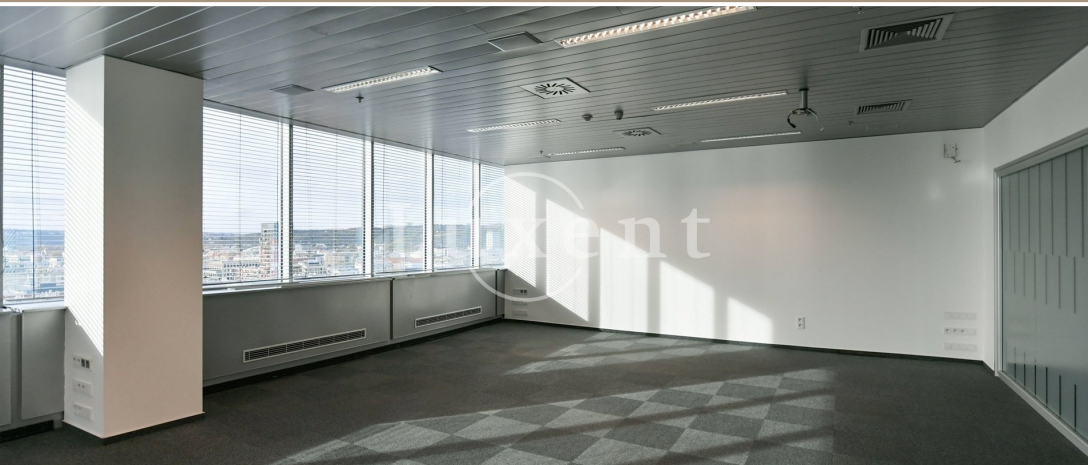




Office for rent with panoramic views, 500 sqm, Jankovcova - Prague 7



🏠 500 m² 📖 Jankovcova, Praha 7 - Holešovice 💰 297 CZK per m2 / month



WITH THIS PROPERTY, YOU'LL BE ASSISTED BY

Anna-Mariia Liubun
ASSISTANT

annamariia.liubun@luxent.cz
+420 770 189 189

Order number	N6747	Price	297 CZK per m2 / month + services
Address	Jankovcova, Praha 7 - Holešovice	Type	Offices
Usable area	500 m²	Parking	Yes
Low energy	No	Energy performance of the building	G - Extremely uneconomical
Floor	1st floor	Number of floors	17
Date to move in	15. 1. 2024		

About real estate

We offer attractive office space for rent in the distinctive Tokovo building, which is undoubtedly the dominant feature of Prague 7 thanks to its height and panoramic views around its entire perimeter.

The building is unmistakable and well-known, and in addition to the views from the offices and the terrace, it offers excellent accessibility and plenty of parking not only for employees but also for clients.

Tokovo has a beautiful lobby with a reception and rest area, where you will find lots of greenery and comfortable seating. In the lobby there is a nice bistro/cafe where you can buy snacks and delicious coffee of all kinds.

There is a fully equipped bike room, a gym with guided classes, conference facilities and a large green terrace with seating, perhaps for those who like to dine in the fresh air.

The building is close to the Vltavská metro line C and the Palmovka metro line B, as well as tram stops. There is a bus stop and a train station two minutes' walk from Tokovo. Holešovice is a fast-growing district that is becoming increasingly attractive due to its location.